

WS-C3750X-48P-L

Datasheet

[Get a Quote](#)



Overview

WS-C3750X-48P-L Cisco Catalyst 3750-X Series Switch

- Stackable 48 10/100/1000 Ethernet PoE+ ports
- Four optional uplink network modules with GE or 10GE ports
- Industry first PoE+ with 30W power on all ports in 1 rack unit (RU) form factor
- Dual redundant, modular power supplies and fans
- Media Access Control Security (MACsec) hardware-based encryption
- Flexible NetFlow and switch-to-switch hardware encryption with the Service Module uplink
- USB Type-A and Type-B ports for storage and console respectively and an out-of-band Ethernet management port
- StackWise Plus
- Cisco StackPower™ technology: An innovative feature and industry first for sharing power among stack members
- Cisco StackWise Plus technology for ease of use and resiliency with 64 Gbps of throughput
- Investment protection with backward compatibility with all other models of Cisco Catalyst 3750 Series Switches

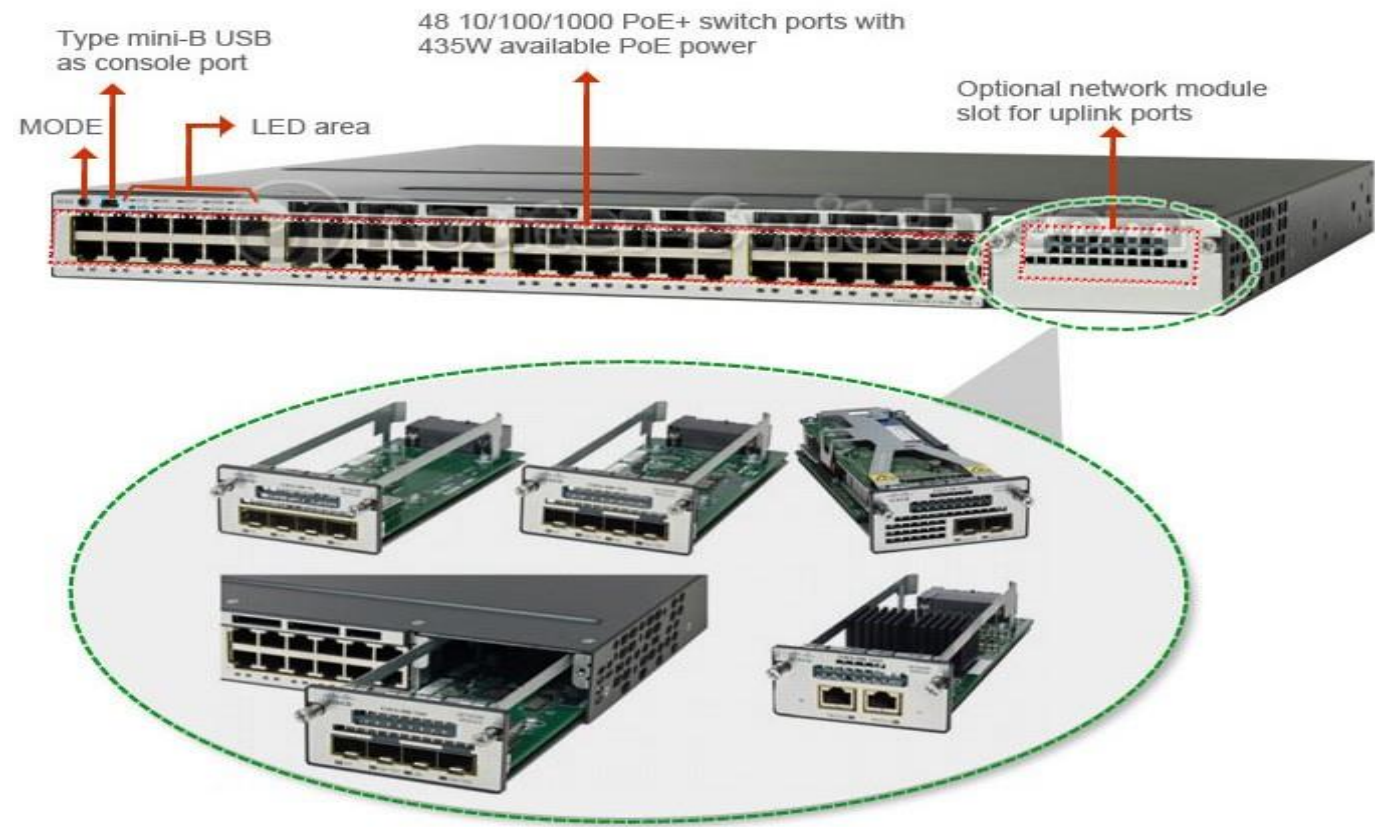


Figure 1

Cisco Catalyst 3750-X Series Switches support 4 optional network modules for uplink ports (Figure 1);
The default switch configuration doesn't include the uplink module;
When purchasing switch, customers have flexibility to choose any group of network modules described below:

Product Number	Product Description
C3KX-NM-1G	Four GbE port network module

C3KX-NM-10G	Two 10GbE SFP+ ports network module with four physical ports with two SFP+ and two regular SFP ports
C3KX-NM-10GT	Two 10GB-T ports network module
C3KX-SM-10G	Service Module with two 10GbE SFP+ ports network module for Netflow and MACsec encryption

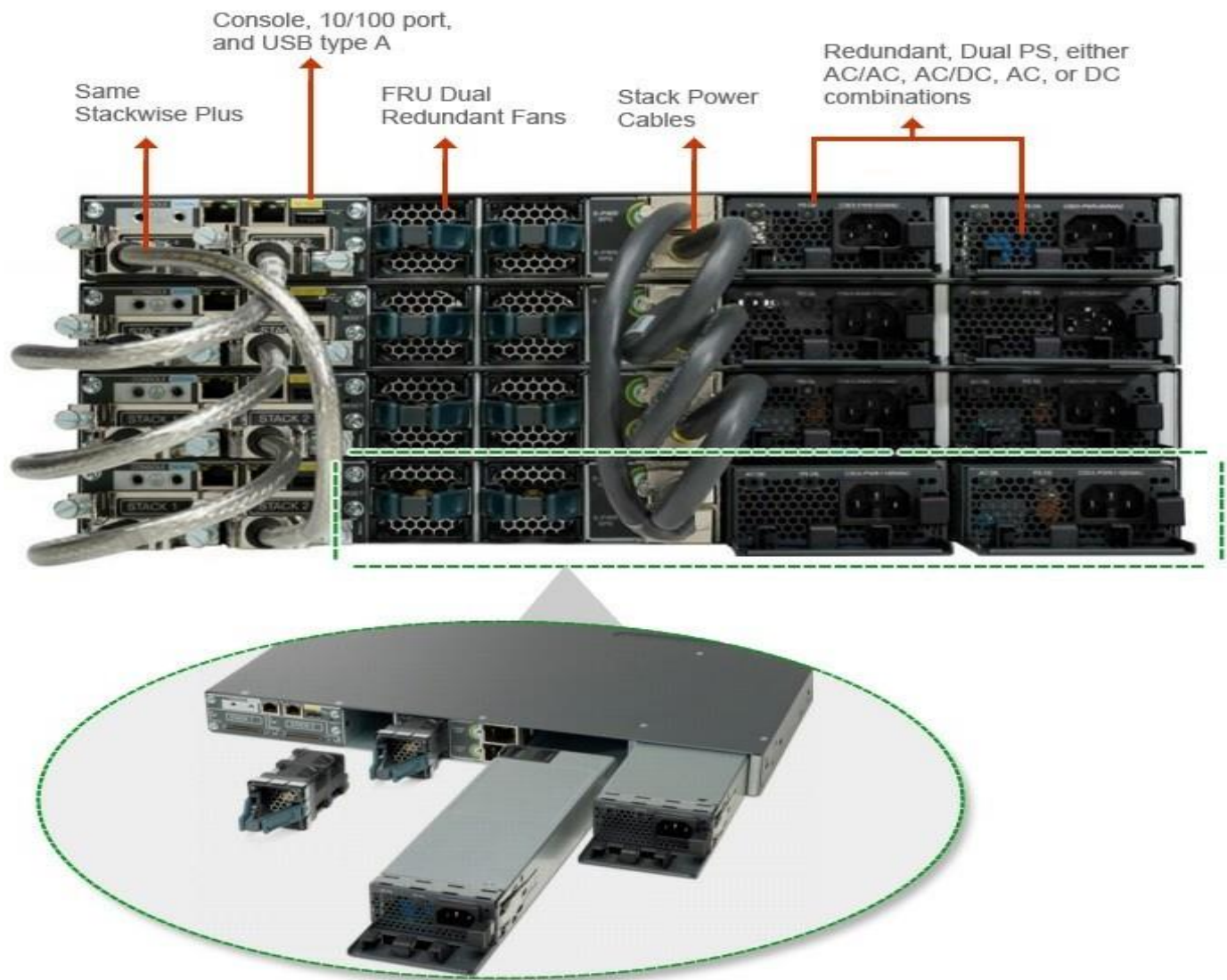


Figure 2

Dual Redundant Modular Power Supplies

Cisco Catalyst 3750-X Series and 3560-X Series Switches support dual redundant power supplies (Figure 2); One power supply is shipped with the switch by default; Other power supply/suppliers can be purchased when ordering the switch or next time according to your needs. If only one power supply is installed, it should always be in the power supply bay 1.

Table below shows the different power supplies available in these switches and available PoE power.

Power Supply Models

Models	Default Power Supply	Available PoE Power
24 Port Data Switch	C3KX-PWR-350WAC	-
48 Port Data Switch		
24 Port PoE Switch	C3KX-PWR-715WAC	435W
48 Port PoE Switch		
48 Port Full PoE Switch	C3KX-PWR-1100WAC	800W

24 Port UPOE Switch	C3KX-PWR-1100WAC	800W
48 Port UPOE Switch		

Besides the above power supplies, a 440W DC power supply is available as a spare (should be ordered separately) on all switch models; The DC power supply also delivers PoE capabilities for maximum flexibility, (please refer to table 7 for available PoE for different configurations); Customers can mix and match the AC and DC power supplies in the two available power supply slots. Any of these power supplies can be installed in any of the switches.

Available PoE with DC power supply

Model	# of 440W DC PS	Total Available PoE Budget
24-Port PoE Switch	1	220W
	2	660W
48-Port PoE Switch	1	185W
	2	625W
UPOE (60W per port)	One C3KX-PWR-715WAC and one C3KX-PWR-1100WAC or Two C3KX-PWR-1100WAC	One C3KX-PWR-715WAC and one C3KX-PWR-1100WAC or Two C3KX-PWR-1100WAC

Cisco Catalyst 3750-X Series Switch WS-C3750X-48P-L is an enterprise-class lines of stackable and standalone switches, respectively. Catalyst 3750-X switches provide high availability, scalability, security, energy efficiency, and ease of operation with innovative features such as Cisco StackPower, IEEE 802.3at Power over Ethernet Plus (PoE+) configurations, optional network modules, redundant power supplies, and Media Access Control Security (MACsec) features. Cisco Catalyst 3750-X Series with StackWise Plus technology provides scalability, ease of management and investment protection for the evolving business needs. The Cisco Catalyst 3750-X switches enhance productivity by enabling applications such as IP telephony, wireless, and video for borderless network experience.

Specification




WS-C3750X-48P-L data sheet	
Manufacturer	Cisco Systems, Inc
Manufacturer Part Number	WS-C3750X-48P-L
Product Type	Switch - 48 ports - Managed - stackable
Form Factor	Fixed, Rack Mountable 1U, Stackable/Clustering
Switch Port density - Uplinks	48 x 10/100/1000 Ethernet Ports
Power Over Ethernet (PoE)	Yes
Max Number of Stacks	9
Remote Management Protocol	SNMP 1, SNMP 2, RMON 1, RMON 2, RMON 3, RMON 9, Telnet, SNMP 3, SNMP 2c, FTP, TFTP, SSH, CLI
Authentication Method	Kerberos, Secure Shell (SSH), RADIUS, TACACS+

Features	Hot swap module replacement, Layer 2 switching, dynamic IP address assignment , DHCP support, power over Ethernet (PoE), auto-negotiation, ARP support, trunking, VLAN support, auto-uplink (auto MDI/MDI-X), IGMP snooping, Syslog support, traffic shaping, Broadcast Storm Control, High Availability, Multicast Storm Control, Unicast Storm Control, Rapid Spanning Tree Protocol (RSTP) support, DHCP snooping, Dynamic Trunking Protocol (DTP) support, Port Aggregation Protocol (PAgP) support, Access Control List (ACL) support, Quality of Service (QoS), Jumbo Frames support, MLD snooping, Dynamic ARP Inspection (DAI), PoE+, Per-VLAN Spanning Tree Plus (PVST+)
Compliant Standards	IEEE 802.3, IEEE 802.3u, IEEE 802.3z, IEEE 802.1D, IEEE 802.1Q, IEEE 802.3ab, IEEE 802.1p, IEEE 802.3af, IEEE 802.3x, IEEE 802.3ad (LACP), IEEE 802.1w, IEEE 802.1x, IEEE 802.1s, IEEE 802.3at
DRAM Memory	256 MB
Flash Memory	128 MB Flash
LED Status Lights Indicators	Port status, link activity, port transmission speed, port duplex mode, power, system
Connectivity / Expansion Slots	
Interfaces	48 x 10Base-T/100Base-TX/1000Base-T - RJ-45 - PoE USB : 1 x 4 PIN USB Type A 1 x console - mini-USB Type B - management 1 x RS-232 - RJ-45 - management 1 x 10Base-T/100Base-TX - RJ-45 - management Network stack device : 2 x
Expansion Slots Total (Free)	1 (1) x Expansion Slot
Power Supply Specifications	
Power Device	Power supply - redundant - plug-in module
Installed Qty	1 (installed) / 2 (max)
Power Redundancy	Optional
Power Redundancy Scheme	1+1 (with optional power supply)
Voltage Required	AC 120/230 V (50/60 Hz)
Features	Redundant Power System (RPS) connector
Dimensions / Weight / Miscellaneous	
Width	44.5 cm
Depth	46 cm
Height	4.5 cm
Weight	7.5 kg
Rack Mounting Kit	Optional
MTBF	139,913 hour(s)
Compliant Standards	CE, TUV GS, CISPR 22 Class A, GOST, cUL, NOM, VCCI Class A ITE, EN55022 Class A, CB, AS/NZS 60950-1, AS/NZ 3548 Class A, CCC, RoHS, UL 60950-1, IEC 60950-1, EN 60950-1, KCC, FCC Part 15 A, CSA C22.2 No. 60950-1
System Software	
Software Included	Cisco IOS LAN Base
Manufacturer Warranty	

Service & Support	Limited lifetime warranty
Service & Support Details	Limited warranty - lifetime Limited warranty - power supply and fans - 5 years New releases update

Download Resource

Transition Guide






-  [Find the Right 3650 and 3850 Models](#)
-  [Guide to Upgrade Cisco Access and Backbone Switch](#)
-  [Selecting Cisco Switches-Campus, Branch, Digital Building](#)

Want to Buy

- [Order Now](#)
- [Get a Quote](#)

Why Gntme.com

As a leading network hardware supplier, [gntme.com](#) focuses on original new ICT equipment of [Cisco](#), [Huawei](#), [HPE](#), [Dell](#), [Hikvision](#), [Juniper](#), [Fortinet](#), etc.

 200+ Countries we Sold	 18,000+ Customers Trusted	 \$20,000,000 Inventory Available	 50%-98% Off Global List Price	 100% Safe Online Shopping
--	---	--	---	---

Contact Us

- Tel: +971 503823786 / +971 42409998
- Email: sales@gntme.com