

# IE-2000-8TC-B Datasheet



Get a Quote

## Overview

IE-2000-8TC-B is the IE2000 series 8 10/100,2 FE SFP+2 T/SFP FE, and LAN Base switch. The Cisco IE 2000 Series are designed for low cost, low ports, and small sizes. They offer:

1. Four, eight, or 16 10/100Base-T Ethernet ports (Small Form-Factor Pluggable [SFP] downlinks on selected models); fixed configurations with a compact form factor
2. Two gigabit combo ports: SFP (100 Mbps and 1 Gbps) or RJ45 uplink
3. Dual-input DC power supply, alarm relays, DIN rail mount
4. Industrial Power over Ethernet (PoE) solution
5. Conformal coating available
6. Swappable SD flash card and mini-USB connector
7. Industrial environmental compliance and certifications
8. Industrial partner applications: Ethernet/IP and PROFINET

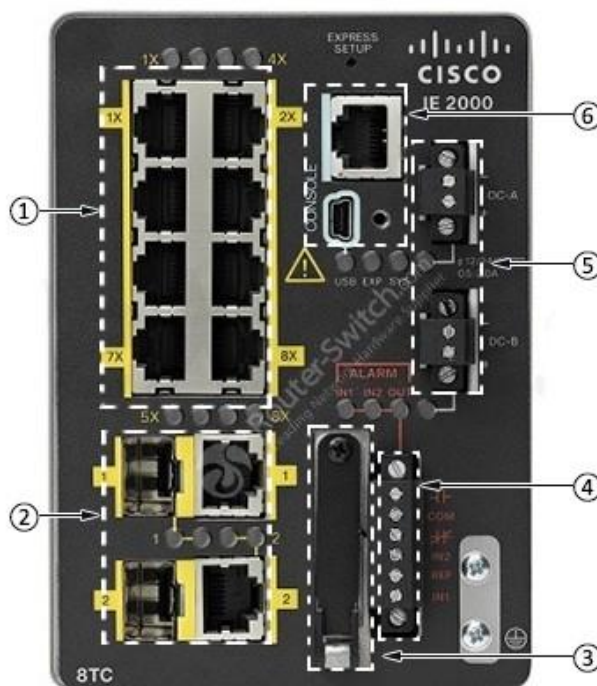
## Quick Spec

Table 1 shows the quick spec.

<b>Part Number</b>	IE-2000-8TC-B
<b>Total Ports</b>	10
<b>RJ45 Ports</b>	8 FE
<b>Combo Ports</b>	2 FE
<b>Manufacturing license</b>	LAN Base

## Product Details

Figure 1 shows the front view of IE2000 8TC switches.



Note:

(1)	8 10/100
(2)	2 FE SFP+2 T/SFP FE
(3)	SD Flash
(4)	2 Dry-contact alarm inputs, and 1 alarm relay output
(5)	Dual DC inputs
(6)	Console port RJ45 and Mini USB

## Supported Products

Table 2 shows the supported modules, cards, licenses and accessories.

Model	Description
<a href="#">SD-IE-1GB</a>	1GB SD Memory Card
<a href="#">GLC-FE-100LX-RGD</a>	Cisco GLC-FE-100LX-RGD 100Mbps Single Mode Rugged SFP
<a href="#">GLC-FE-100LX-RGD</a>	Cisco GLC-FE-100LX-RGD 100Mbps Single Mode Rugged SFP
<a href="#">GLC-FE-100FX</a>	100BASE-FX SFP for FE port
<a href="#">GLC-FE-100LX</a>	100BASE-LX SFP for FE port
<a href="#">LIC-IE2000-IP-L=</a>	IE2000 LAN Base or Enhanced LAN Base to IPLite e-license
<a href="#">L-IE2000-B-E=</a>	IE2000 LAN Base to Enhanced LAN Base e-license
<a href="#">STK-RACK-DINRAIL=</a>	19 in. DIN Rail mount kit

## Compare to Similar Items

Table 3 shows the comparison.

Part Number	<a href="#">IE-2000-8TC-L</a>	<a href="#">IE-2000-8TC-B</a>
<b>Total Ports</b>	10	10
<b>RJ45 ports</b>	8 FE	8 FE
<b>Combo Ports</b>	2 FE	2 FE
<b>Manufacturing license</b>	LAN Lite	LAN Base

## Ordering Guide

 [\[PDF\] Cisco Industrial Ethernet Switches Ordering Guide](#)

 [\[PDF\] Simple Cisco Industrial Ethernet Switches \(IE 4000, IE 2000 included\) Selection Guides](#)

## Get More Information

Do you have any question about the C9500-32QC-A?

Contact us now via [Live Chat](#) or [sales@gntme.com](mailto:sales@gntme.com)

## Specification

### IE-2000-8TC-B Specification

#### Physical Specification

<b>Total Ports</b>	10
<b>RJ45 Ports</b>	8 FE
<b>Combo Ports</b>	2 FE
<b>Manufacturing license</b>	LAN Base
<b>Power consumption</b>	8-port downlink models: 12.5-20 W
<b>Hardware</b>	<ul style="list-style-type: none"> <li>• 256 MB DRAM with ECC memory</li> <li>• IEEE 1588v2 FPGA</li> <li>• 64 MB on-board flash memory</li> <li>• 1GB removable SD flash memory card (optional)</li> <li>• Mini-USB connector</li> </ul>
<b>Alarm</b>	<ul style="list-style-type: none"> <li>• Alarm I/O: Two alarm inputs to detect dry contact open or close; one alarm output relay</li> </ul>
<b>Connectors and cabling</b>	<ul style="list-style-type: none"> <li>• 10/100/1000BASE-T ports: RJ-45 connectors, 4-pair Category 5 UTP cabling</li> </ul>

### **IE2000 Software Features**

<b>LAN Lite license</b>	<b>Baseline features</b>
Layer 2 switching	IEEE 802.1, 802.3, 802.3at, 802.3af standard (see Table 8), VTPv2, NTP, UDLD, CDP, LLDP, Unicast MAC filter, Resilient Ethernet Protocol (REP), Media Redundancy Protocol (MRP) Ring (IEC 62439-2)
Security	SCP, SSH, SNMPv3, TACACS+, RADIUS Server/Client, MAC Address Notification, BPDU Guard, SPAN session
Multicast	IGMPv1, v2, v3 Snooping, IGMP filtering, IGMP Querier
Management	Fast Boot, Express Setup, Web Device Manager, CNA, Cisco Prime, LMS, MIB, SmartPort, SNMP, syslog
Industrial Ethernet	EtherNet/IP, Profinet v2
<b>LAN Base license</b>	<b>Additional features</b>
Layer 2 switching	VTPv3, EtherChannel, Voice VLAN, Flexlink
Security	IPv4 Port-Security, DHCP Snooping, Dynamic ARP Inspection, IP Source Guard, 802.1x, Guest VLAN, MAC Authentication Bypass, 802.1x Multi-Domain Authentication, Storm Control, Trust Boundary, Access-List (ACL)
Quality of service	IPv4 Ingress Policing, Rate-Limit, Egress Queuing/Shaping, AutoQoS, PROFINET QoS
Management	Port-Based DHCP, Storm Control - Unicast, Multicast, Broadcast, SPAN Sessions, RSPAN, DHCP Server, Customized TCAM/SDM Size Configuration, Embedded Event Manager (EEM)
Industrial Ethernet	IEEE 1588 PTPv2
IPv4 routing	IPv4 static routing
IPv6 routing	IPv6 host support, HTTP over IPv6, SNMP over IPv6
<b>Enhanced LAN Base</b>	<b>Additional features</b>
Industrial management	Layer 2 switching with 1:1 static Network Address Translation (NAT)
<b>IP Lite license</b>	<b>Additional features</b>
IPv4 routing	RIP, OSPF, EIGRP, VRF Lite, PIM for L3 multicast routing including sparse (SM) and dense (DM) mode.
IPv6 Routing	IPv6 Static routing, OSPFv3
Security	FIPS 140-2

Embedded Event Manager	EEM feature enabled with IP Lite license
DNA Essentials	Additional features
Cisco DNA Center	Discovery, topology, inventory, software image management
Visibility	DNA assurance, Device 360
Day-zero network bring-up automation	Cisco Network Plug-and-Play application

## Want to Buy

Order Now

Get a Quote

## Why [Gntme.com](https://gntme.com)

As a leading network hardware supplier, [gntme.com](https://gntme.com) focuses on original new ICT equipment of [Cisco](https://www.cisco.com), [Huawei](https://www.huawei.com), [HPE](https://www.hpe.com), [Dell](https://www.dell.com), [Hikvision](https://www.hikvision.com), [Juniper](https://www.juniper.com), [Fortinet](https://www.fortinet.com), etc.



200+

Countries we Sold



18,000+

Customers Trusted



\$20,000,000

Inventory Available



50%-98%

Off Global List Price



100%

Safe Online Shopping

## Contact Us

- Tel: [+971 503823786](tel:+971503823786) / [+971 42409998](tel:+97142409998)
- Email: [sales@gntme.com](mailto:sales@gntme.com)