

IE-2000-16TC-G-X Datasheet



[Get a Quote](#)

Overview

IE-2000-16TC-G-X is the IE2000 series IE 16 10/100,2 FE SFP+2 T/SFP, Base with 1588, Comf. Coat switch. The Cisco IE 2000 Series are designed for low cost, low ports, and small sizes. They offer:

1. Four, eight, or 16 10/100Base-T Ethernet ports (Small Form-Factor Pluggable [SFP] downlinks on selected models); fixed configurations with a compact form factor
2. Two gigabit combo ports: SFP (100 Mbps and 1 Gbps) or RJ45 uplink
3. Dual-input DC power supply, alarm relays, DIN rail mount
4. Industrial Power over Ethernet (PoE) solution
5. Conformal coating available
6. Swappable SD flash card and mini-USB connector
7. Industrial environmental compliance and certifications
8. Industrial partner applications: Ethernet/IP and PROFINET

Quick Spec

Table 1 shows the quick spec.

Part Number	IE-2000-16TC-G-X
Total Ports	20
RJ45 Ports	16 FE
Combo Ports	2 GE
SFP Ports	2 FE
Manufacturing license	LAN Base
Type of possible upgrade	1, 2, 4
IEEE 1588	Yes
L2NAT	Upgradable to L2NAT via Enhanced Lan Base or IP Lite license
Conformal coating	Yes

"Type of possible upgrade" legend:

1: LAN Base to IP Lite Cisco IOS Software Upgrade

2: Enhanced LAN Base to IP Lite Cisco IOS Software

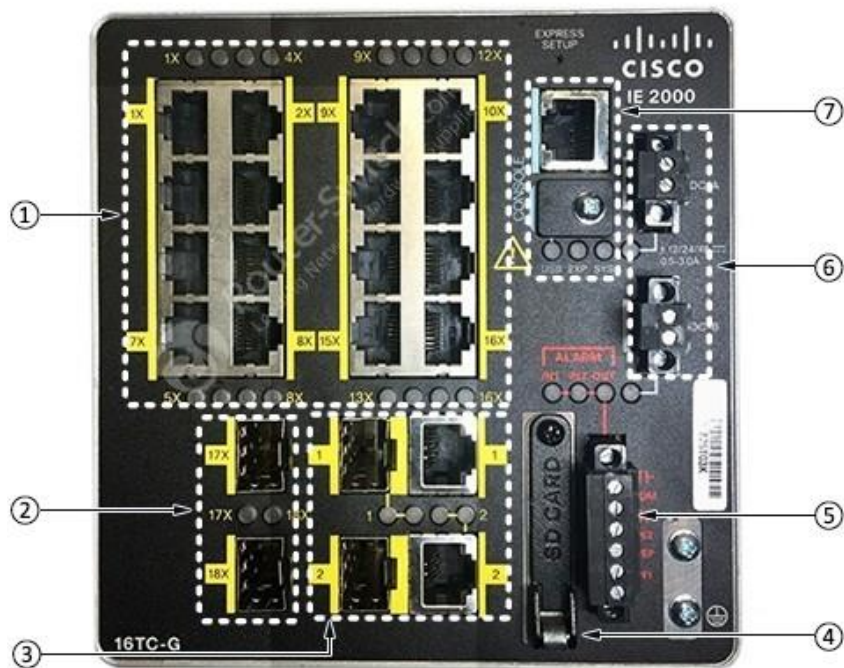
Upgrade 3: LAN Lite to LAN Base Cisco IOS Software

Upgrade

4: LAN Base to Enhanced LAN Base Cisco IOS Software Upgrade and License Upgrade

Product Details

Figure 1 shows the front view of IE2000 16TC-G switches.



Note:

(1)	16 10/100
(2)	2 FE SFP
(3)	2 GE Combo Ports
(4)	SD Flash
(5)	2 Dry-contact alarm inputs, and 1 alarm relay output
(6)	Dual DC inputs
(7)	Console port RJ45 and Mini USB

Supported Products

Table 2 shows the supported modules, cards, licenses and accessories.

Model	Description
SD-IE-1GB	1GB SD Memory Card
GLC-FE-100LX-RGD	Cisco GLC-FE-100LX-RGD 100Mbps Single Mode Rugged SFP
GLC-FE-100LX-RGD	Cisco GLC-FE-100LX-RGD 100Mbps Single Mode Rugged SFP
GLC-FE-100FX	100BASE-FX SFP for FE port
GLC-FE-100LX	100BASE-LX SFP for FE port
GLC-FE-100EX	100BASE-EX SFP (40km)
GLC-FE-100ZX	100BASE-ZX SFP (80km)
GLC-FE-100BX-D	100BASE-BX10-D SFP
GLC-FE-100BX-U	100BASE-BX10-U SFP
GLC-SX-MM-RGD	Cisco GLC-SX-MM-RGD 1000Mbps Multi-Mode Rugged SFP
GLC-BX40-U-I	1000BASE-BX10 SFP module for single-strand SMF, 1310-nm TX/1550-nm RX wavelength, single LC/PC connector

GLC-TE	1000BASE-T SFP transceiver module for Category 5 copper wire
GLC-ZX-SM	1000BASE-ZX SFP
GLC-BX-U	1000BASE-BX SFP, 1310NM
SFP-GE-L	1000BASE-LX/LH SFP (DOM)
GLC-ZX-SMD	Cisco GLC-ZX-SMD 1000BASE-ZX SFP transceiver module, SMF, 1550nm, DOM
GLC-SX-MMD	Cisco GLC-SX-MMD 1000BASE-SX SFP transceiver module, MMF, 850nm, DOM
LIC-IE2000-IP-L=	IE2000 LAN Base or Enhanced LAN Base to IPLite e-license
STK-RACK-DINRAIL=	19 in. DIN Rail mount kit

Compare to Similar Items

Table 3 shows the comparison.

Part Number	IE-2000-16TC-G-X	IE-2000-16TC-G-L
Total Ports	20	20
RJ45 Ports	16 FE	16 FE
Combo Ports	2 GE	2 GE
SFP Ports	2 FE	2 FE
Manufacturing license	LAN Base	LAN Lite
Type of possible upgrade	1, 2, 4	3
Conformal coating	Yes	N/A

“Type of possible upgrade” legend:

1: LAN Base to IP Lite Cisco IOS Software Upgrade

2: Enhanced LAN Base to IP Lite Cisco IOS Software

Upgrade 3: LAN Lite to LAN Base Cisco IOS Software

Upgrade

4: LAN Base to Enhanced LAN Base Cisco IOS Software Upgrade and License Upgrade

Ordering Guide

 [\[PDF\] Cisco Industrial Ethernet Switches Ordering Guide](#)

[\[PDF\] Simple Cisco Industrial Ethernet Switches \(IE 4000, IE 2000 included\) Selection Guides](#)

Get More Information

Do you have any question about the C9500-32C-A?
Contact us now via [Live Chat](#) or sales@gntme.com

Specification

IE-2000-16TC-G-X Specification	
Physical Specification	
Total Ports	20
RJ45 Ports	16 FE

Combo Ports	2 GE
SFP Ports	2 FE
Manufacturing license	LAN Base
IEEE 1588	Yes
L2NAT	Upgradable to L2NAT via Enhanced Lan Base or IP Lite license
Conformal coating	Yes
Power consumption	16-port downlink models: 21-30 W
Hardware	<ul style="list-style-type: none"> • 256 MB DRAM with ECC memory • IEEE 1588v2 FPGA • 64 MB on-board flash memory • 1GB removable SD flash memory card (optional) • Mini-USB connector
Alarm	<ul style="list-style-type: none"> • Alarm I/O: Two alarm inputs to detect dry contact open or close; one alarm output relay
Connectors and cabling	<ul style="list-style-type: none"> • 10/100/1000BASE-T ports: RJ-45 connectors, 4-pair Category 5 UTP cabling

IE2000 Software Features

LAN Lite license	Baseline features
Layer 2 switching	IEEE 802.1, 802.3, 802.3at, 802.3af standard (see Table 8), VTPv2, NTP, UDLD, CDP, LLDP, Unicast MAC filter, Resilient Ethernet Protocol (REP), Media Redundancy Protocol (MRP) Ring (IEC 62439-2)
Security	SCP, SSH, SNMPv3, TACACS+, RADIUS Server/Client, MAC Address Notification, BPDU Guard, SPAN session
Multicast	IGMPv1, v2, v3 Snooping, IGMP filtering, IGMP Querier
Management	Fast Boot, Express Setup, Web Device Manager, CNA, Cisco Prime, LMS, MIB, SmartPort, SNMP, syslog
Industrial Ethernet	EtherNet/IP, Profinet v2
LAN Base license	Additional features
Layer 2 switching	VTPv3, EtherChannel, Voice VLAN, Flexlink
Security	IPv4 Port-Security, DHCP Snooping, Dynamic ARP Inspection, IP Source Guard, 802.1x, Guest VLAN. MAC Authentication Bypass, 802.1x Multi-Domain Authentication, Storm Control, Trust Boundary, Access-List (ACL)
Quality of service	IPv4 Ingress Policing, Rate-Limit, Egress Queuing/Shaping, AutoQoS, PROFINET QoS
Management	Port-Based DHCP, Storm Control - Unicast, Multicast, Broadcast, SPAN Sessions, RSPAN, DHCP Server, Customized TCAM/SDM Size Configuration, Embedded Event Manager (EEM)
Industrial Ethernet	IEEE 1588 PTPv2
IPv4 routing	IPv4 static routing
IPv6 routing	IPv6 host support, HTTP over IPv6, SNMP over IPv6
Enhanced LAN Base	Additional features
Industrial management	Layer 2 switching with 1:1 static Network Address Translation (NAT)
IP Lite license	Additional features
IPv4 routing	RIP, OSPF, EIGRP, VRF Lite, PIM for L3 multicast routing including sparse (SM) and dense (DM) mode.

IPv6 Routing	IPv6 Static routing, OSPFv3
Security	FIPS 140-2
Embedded Event Manager	EEM feature enabled with IP Lite license
DNA Essentials	Additional features
Cisco DNA Center	Discovery, topology, inventory, software image management
Visibility	DNA assurance, Device 360
Day-zero network bring-up automation	Cisco Network Plug-and-Play application

Want to Buy

[Order Now](#)
[Get a Quote](#)

Why Gntme.com

As a leading network hardware supplier, **gntme.com** focuses on original new ICT equipment of **Cisco**, **Huawei**, **HPE**, **Dell**, **Hikvision**, **Juniper**, **Fortinet**, etc.



200+

Countries we Sold



18,000+

Customers Trusted



\$20,000,000

Inventory Available



50%-98%

Off Global List Price



100%

Safe Online Shopping

Contact Us

- Tel: +971 503823786 / +971 42409998
- Email: sales@gntme.com